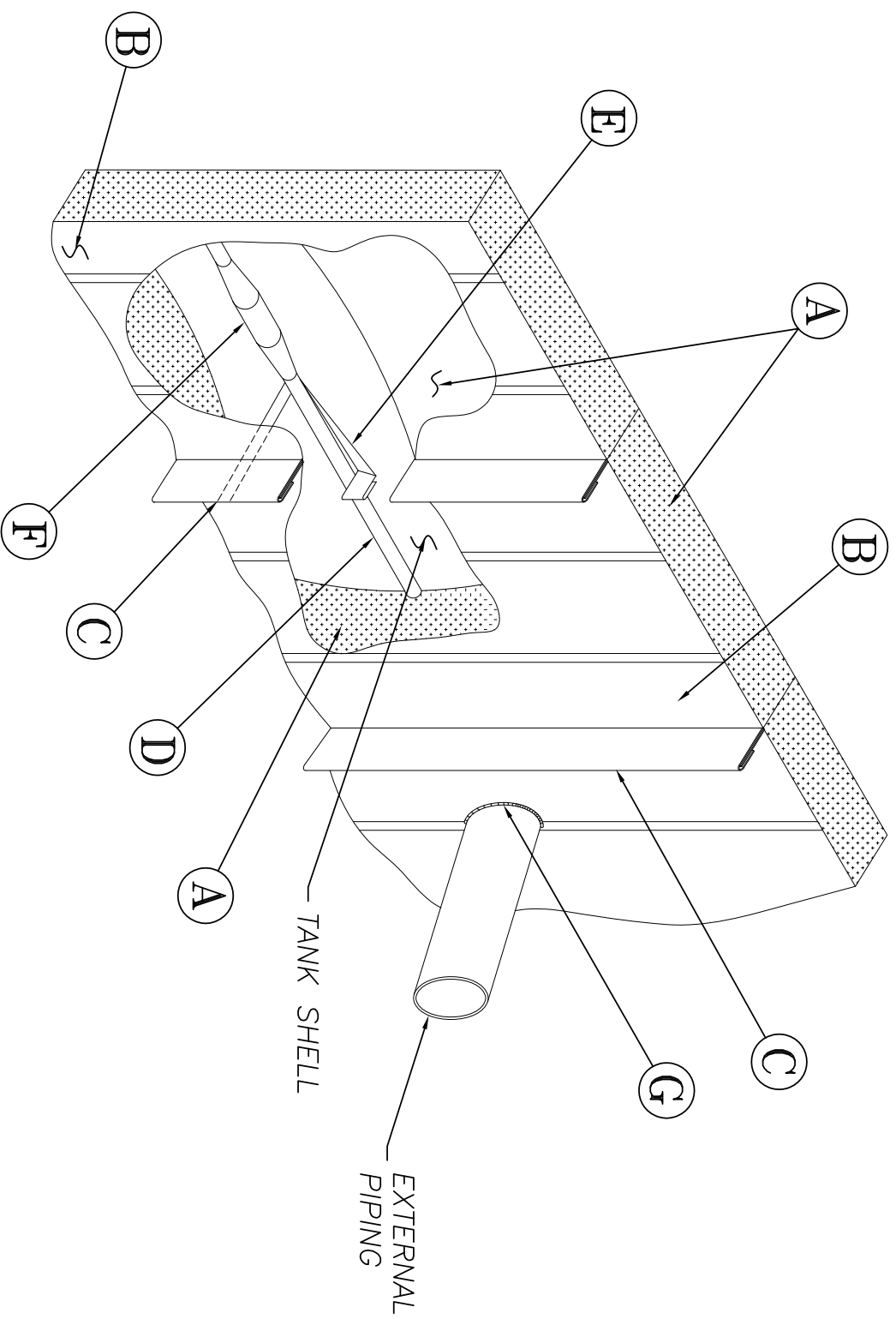




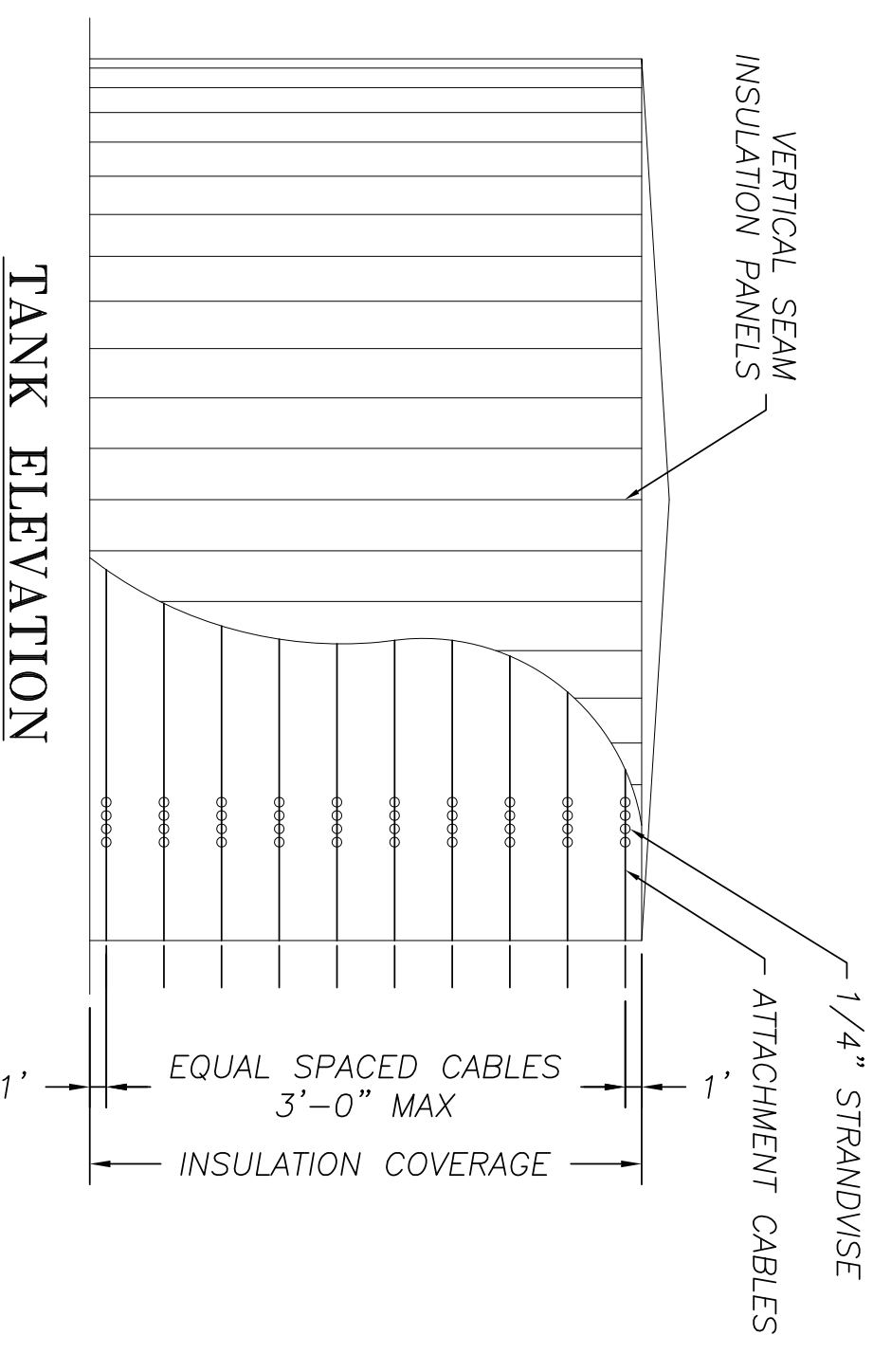
VERTICAL STANDING SEAM
 PANEL INSULATION SYSTEM



DETAIL OF VERTICAL PANEL

SYSTEM COMPONENTS

- A) SHELL & ROOF INSULATION: POLYISOCYANURATE OR AS SPECIFIED
- B) METAL: .024" THICK STUCCO EMBOSSED ALUMINUM OR AS SPECIFIED
- C) DOUBLE FOLDED VERTICAL STANDING SEAMS
- D) CABLE: .25" THICK STAINLESS STEEL CABLES SPACED AS SHOWN
- E) BANDING: .50" W X .015 THICK STAINLESS STEEL BANDING
- F) STRANDWISE CABLE CONNECTORS
- G) CAULKING: (TYPE BASED ON OPERATING TEMP)



TANK ELEVATION



VERTICAL STANDING SEAM
 SIDE WALL DETAIL

DWG NO. SW-07-02	REV. 1
SCALE-N/A	
DATE: 5-5-17	
PANEL COLOR:	SHT. 1 OF 1